



Introducing the Sound ID 300

Wireless Bluetooth® Headset



Advanced Science.
Clear Sound.



A Sound Background

Sound ID was founded by an ear doctor at Stanford University who hired top scientists and engineers to develop wireless audio products that improve speech intelligibility in noisy listening environments. The result is this exceptional product.

NoiseNavigation™

Automatically isolates speech with dual microphones while managing wind and background noise.

PersonalSound™

The only headset with 3 listening enhancement levels that increase sound clarity without raising the volume.

Exceptional Wearing Comfort

2 wearing styles: ear hook with cushion or 3 sizes (L,M,S) of RealComfort ear loops.

Long Talk Time

Talk up to 6 hours and standby for up to 9 days (220 hours).

Multiple Charging Options

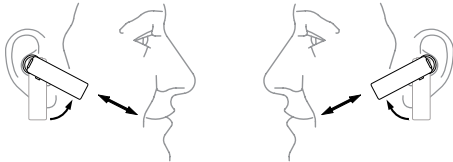
The Sound ID 300 has a standard Micro USB connector that allows charging via an included AC wall charger (100-240 V) or USB port on your PC.

Hear The Difference For Yourself.

Try the Sound ID 300 to feel the comfort and hear the difference.

- ▶▶ **Turn ON/OFF:** Press the Main Button for 3 seconds. The headset will go into pairing mode until the device is paired for the first time. The status light will flash red and green to indicate the headset is in pairing mode. Pair with a phone.

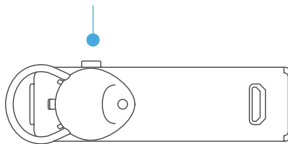
- ▶▶ Insert in your ear and turn so that the headset mic is pointed towards your mouth. If the headset feels too tight or loose in your ear, try the smaller or larger ear tip.



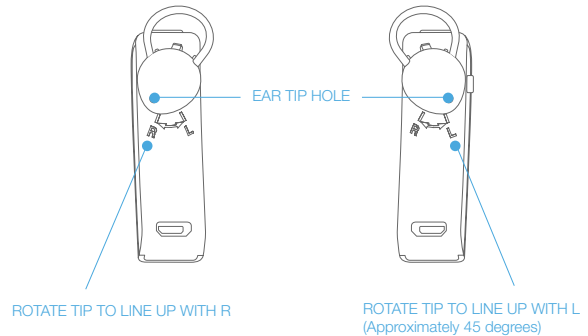
- ▶▶ Select a PersonalSound setting by pressing the Volume/PersonalSound button for approximately 2 seconds, until you hear a corresponding beep to the sound enhancement levels (one, two or three beeps for normal, medium, or strong enhancement). The default setting is normal.

PersonalSound is available only on Sound ID headsets, and improves speech understanding by adjusting frequency and pitch of what you hear, without increasing volume. In a high background-noise environment, a stronger enhancement setting, which can be changed at any time, may help you more clearly understand the conversation.

VOLUME / PERSONALSOUND BUTTON



- ▶▶ Configure for Right or Left Ear



- ▶▶ You can demonstrate the noise reduction capabilities of the Sound ID 300 by turning NoiseNavigation off and on during a call. To turn all noise reduction off, press and hold the Volume/PersonalSound button for two seconds to go to the next PersonalSound mode, until you hear four beeps. To turn noise reduction back on, press and hold the Volume button until you hear one beep.

- ▶▶ Adjust the headset volume with the volume controls on your phone. Volume can also be adjusted on the headset by momentary presses on the Volume/PersonalSound button. Press the Volume/PersonalSound button briefly to go to the next volume setting, out of 4 settings. You will hear a beep at the maximum setting.

- ▶▶ **Using the Sound ID headset with Blackberry phones**

If you have a Blackberry phone, we recommend using the following instructions to turn "Echo Control" off.

- 1) Navigate to "Set Up Bluetooth"
- 2) Highlight the Sound ID 300
- 3) Press the Menu button
- 4) Select "Device Properties" from the list
- 5) In the device properties screen, set "Echo Control" to off
- 6) Press the Escape key (to the right of the trackball) and select save

Key Competitive Features of the Sound ID 300

Feature	Sound ID 300	Why buy Sound ID 300?
Sound quality on the far end	Excellent in background noise and in wind noise due to dual adaptive beam-forming mics and sound isolation algorithms.	Increased speech intelligibility in a wider variety of situations with NoiseNavigation .
Sound quality on caller end (what you hear)	In addition to a volume control, the PersonalSound control has 3 selectable settings that adjust frequency and pitch so you can more clearly understand the conversation.	The only headset with selectable listening modes to improve understanding in various noise environments and individual hearing capability.
Talk time	6 hours	Long talk time.
Exceptional wearing comfort	Includes 3 patented Real Comfort ear tips and ear hook with foam for a secure fit.	Easy to put on, and more comfortable to wear for longer periods of time.
Ease of use	Easy to use controls for main button, volume, and PersonalSound settings.	Easier to use.

SOUND ID 300 SPECIFICATIONS

- In-the-ear headset with optional over-the-ear hook
- Up to 6 hours of talk time
- Up to 9 days (220 hours) of standby time
- Range up to 33 feet (10 meters)
- Built-in Micro USB charging connector
- Automatic volume control
- Dimensions: 15.5mm x 53.5mm (.6in x 2.1in)
- Weighs less than .28 ounces (8 grams)
- Compatible with Bluetooth® 2.1+EDR

ADVANCED BLUETOOTH TECHNOLOGY

The Sound ID 300 features 2.1+EDR (Extended Data Rate) Bluetooth® technology that improves transmission sound quality and is compatible with earlier versions of Bluetooth.